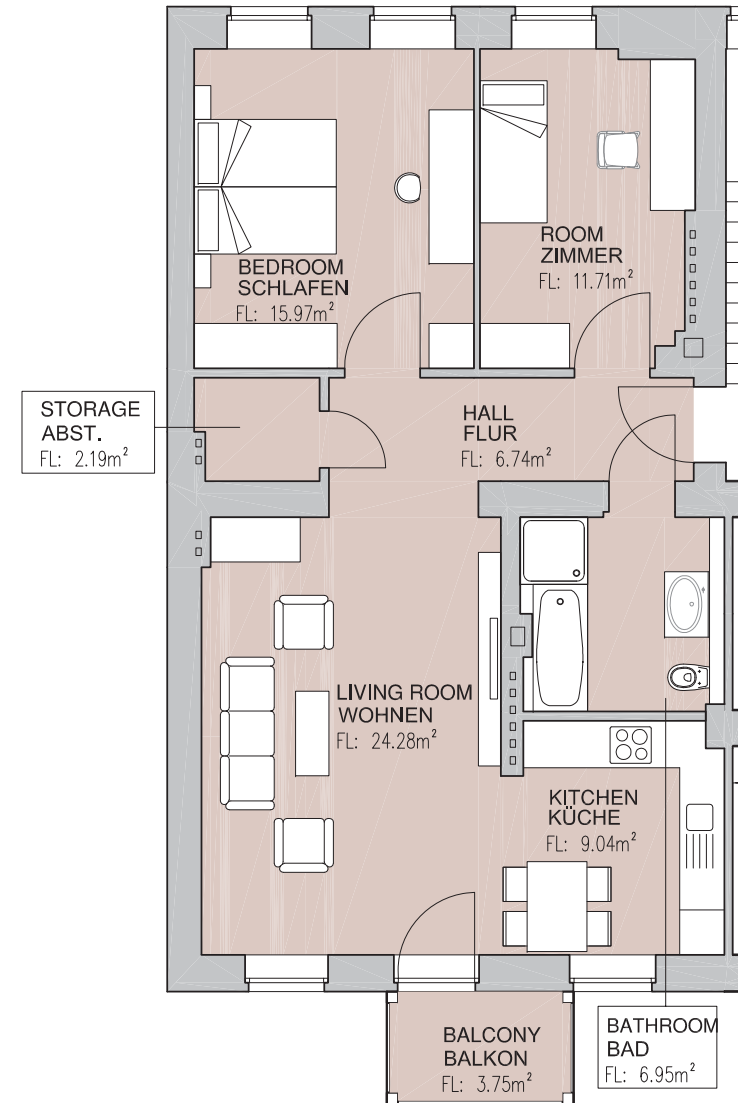
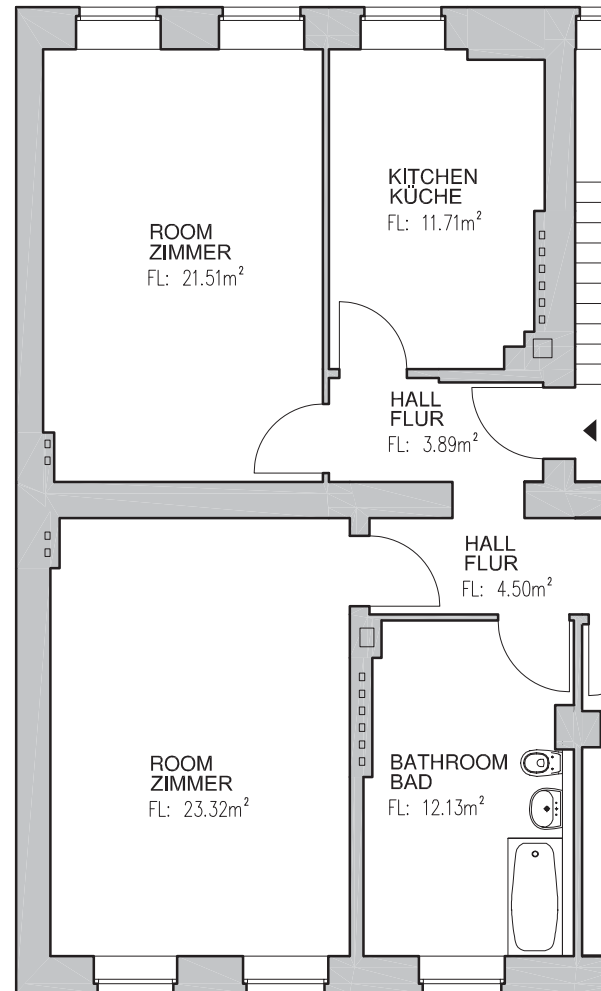
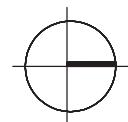


Wohnung 018  
 Gartenhaus  
 1.OG rechts  
 Größe: 78.8m<sup>2</sup>  
 Zimmer: 3  
 Balkon: ja

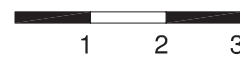


Küche	9.0m <sup>2</sup>
Flur	6.7m <sup>2</sup>
Wohnraum	24.3m <sup>2</sup>
Zimmer	11.7m <sup>2</sup>
Schlafzimmer	15.9m <sup>2</sup>
Bad	6.9m <sup>2</sup>
Abst.	2.2m <sup>2</sup>
Balkon	3.7m <sup>2</sup>

Bezugsfähig: ja  
 Renovierungsbedarf



Grundriss



Grundriss nach potentieller  
 Renovierung